



How to - Ural Windscreen Installation

A how to guide outlining the installation of Ural Motorcycles universal windscreens.

Written By: David



INTRODUCTION

Ural Motorcycles windscreens are an easy way to add protection from wind and rain and easily increase your riding comfort. Ural's universal mount windscreens eliminate much of the clamps, bushings and hardware found on other brands "universal" windscreens. Ural windscreens simplify the installation process with a simple two bolt mounting system that can be installed in a matter of minutes!



TOOLS:

- [6mm Hex Key](#) (1)
- [4mm Hex Key](#) (1)
- [3mm Hex Key](#) (1)
- [Slip Joint Pliers](#) (1)



PARTS:

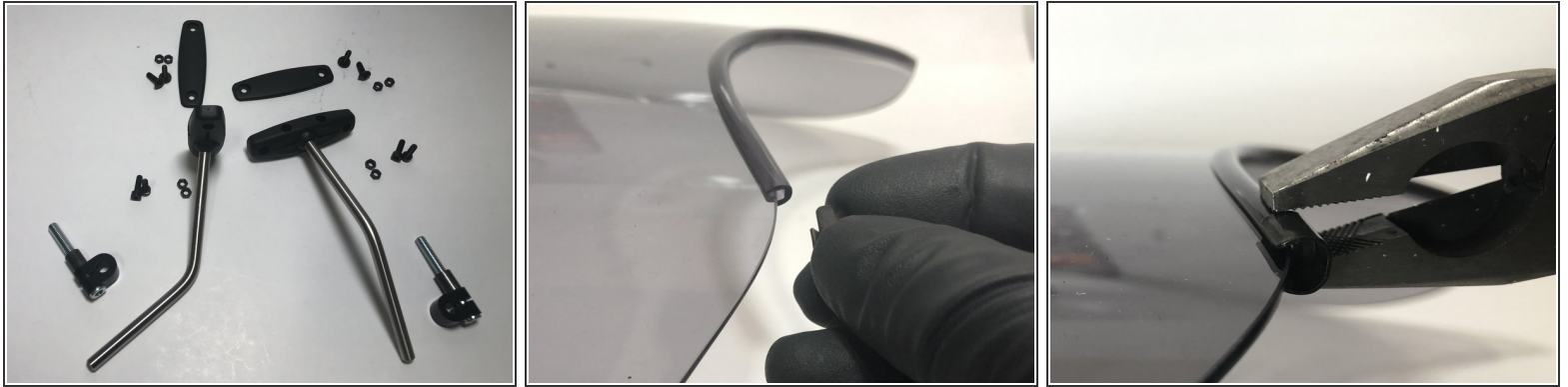
- [50080 - Ural Windscreen Clear with Mounting Kit](#) (1)
- [50081 - Ural Windscreen Smoke with Mounting Kit](#) (1)
- [50082 - Ural Adjustable Touring Windscreen Clear](#) (1)
- [50083 - Ural Adjustable Touring Windscreen Smoke](#) (1)

Step 1 — How to - Ural Windscreen Installation



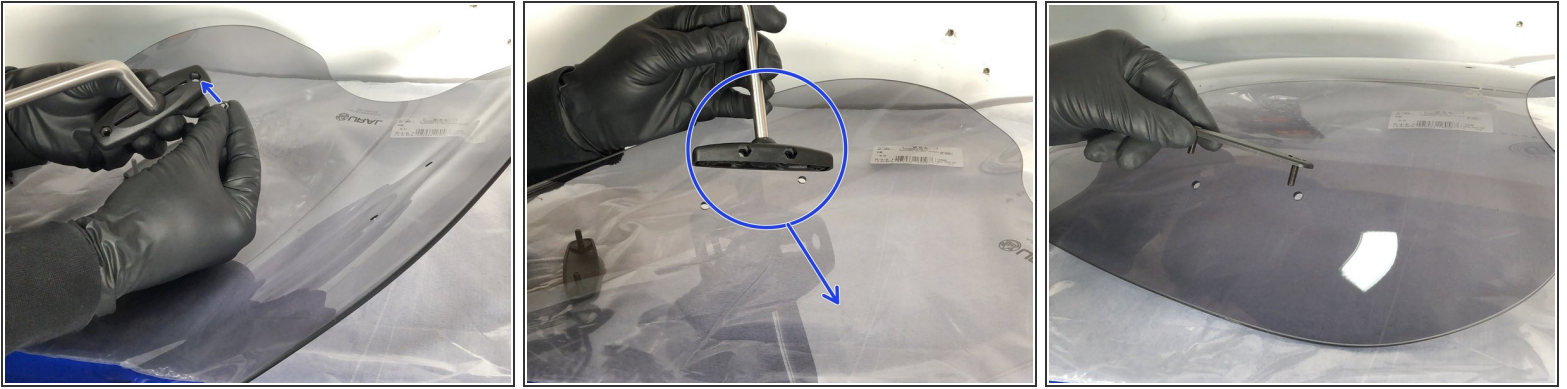
- ❗ Ural windscreens are a simple two (2) bolt mount design. There is plenty of adjustment for best results. The corresponding pictures depict what has proven to be effective on Ural Motorcycles only.
- 📌 The Ural smoke windscreen is used for this installation. The different options available may have features unique to the design. All variations of this item will follow these basic installation instructions.
- Lay out and familiarize yourself with all parts and associated hardware for assembly. Be sure all parts and hardware are accounted for before beginning installation.

Step 2



- ⓘ Most mounting kit components are symmetrical and can be mounted on the left or right side.
 - ⚠ The small black aluminum clamps with the through bolt that secures the windscreen assembly to the handlebar clamps are the only elements that require specific orientation.
- ⓘ The windscreen includes protective trim and metal pinch clamps for securing the protective trim that can help reduce scuffing and/or abrasion to surfaces that may come in contact with each other after installation of the windscreen. The choice to install the included protective trim is left to the installer and/or end user.
 - To install the protective trim, simply work the open side of the pinch weld over the edge of the windscreen where the windscreen edge and the motorcycle headlight housing or dash could make contact.
 - Slide the metal pinch clamps on each end of the protective trim and secure by compressing with pliers.

Step 3



⚠ Place the windscreen on a non abrasive surface that will not damage the finish of the glazing during assembly.

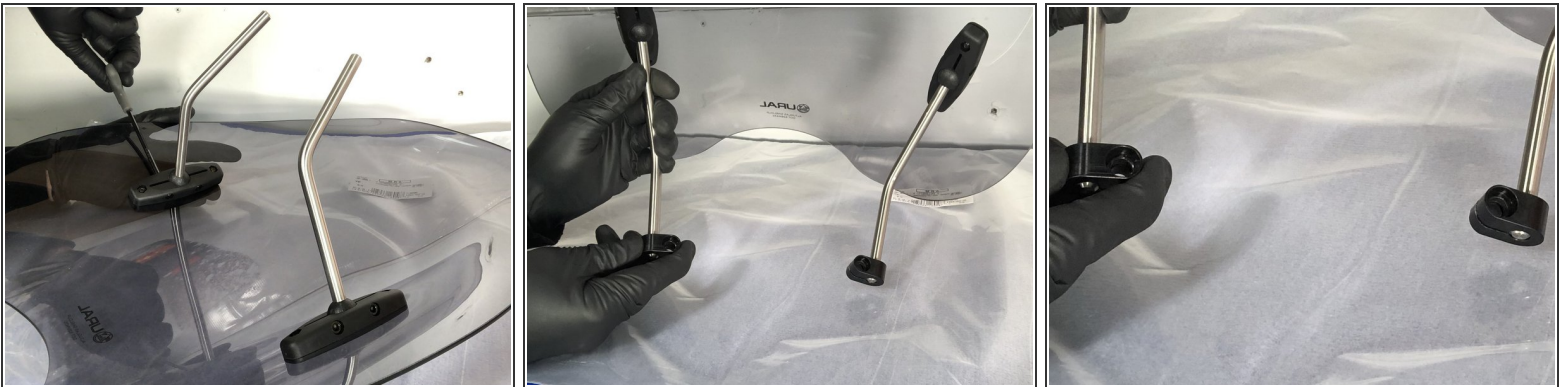
- Insert two of the hex nuts into the top hex shaped holes of a mounting arm base.
- Position the mounting arm base so the hex shaped holes on the side are facing the center of the windscreen.
- Install the flat head hex screws into the front trim piece and insert from the front through to the rearward facing side the windscreen.

Step 4



- Use a 3mm hex key to tighten the flat head hex screws, front trim piece, and mounting arm base with nuts to the glazing.
- Place two (2) hex nuts into the side hex shaped holes of the mounting arm base, insert two (2) cap nut screws into the opposite side.
- Use a 4mm hex key to tighten the hardware compressing the mounting arm ball slightly. **DO NOT** tighten completely. You will need to adjust for desired angle and height later.

Step 5



- Repeat Steps 3 & 4 for the remaining mounting arm.
- Install the mounting arm clamps with the recessed hole facing up and inside the mounting arm.

Step 6



- Use a 6mm hex key or socket and remove the two (2) upper handlebar clamp bolts.
- Insert the two bushings into the recess of the handlebar clamps where the two (2) bolts were removed.

Step 7



- Position the windscreen assembly and insert the two (2) provided longer hex cap bolts into the mounting arm clamp, bushing and handlebar clamp.
- Thread by hand and then use a 6mm hex key or socket and tighten securely while leaving loose enough for slight adjustment.

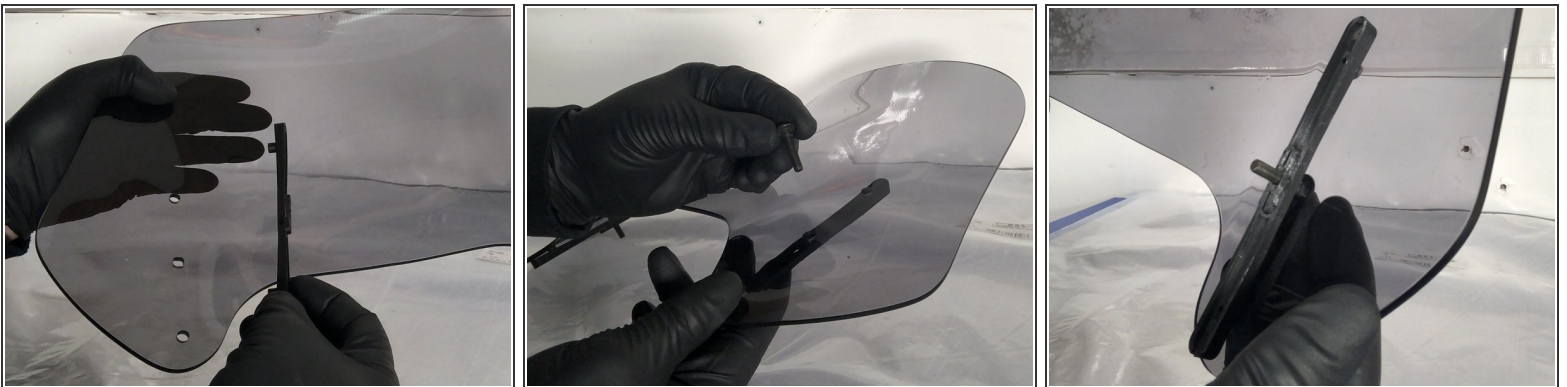
⚠ DO NOT tighten completely at this time. You will tighten completely after adjusting the windscreen.

Step 8



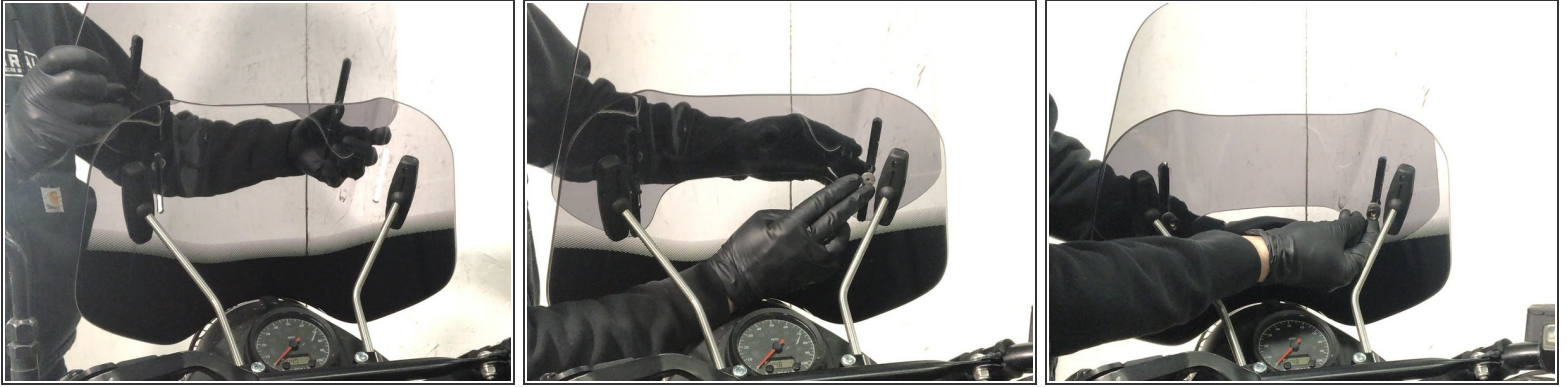
- i** The position of the windscreen, headlight housing and dash board will be different with each installation. The sample windscreen position is in front of the dash panel. If more height is required the bottom of the windscreen may fall on top of the dash panel. Your installation will vary to optimize performance, the photos are only a guide.
- Adjust the windscreen angle and height for the rider. When satisfied secure the hardware locking the adjustment at the ball mount.
 - Finish tightening the handlebar clamp bolts to lock the handlebar in position and prevent it from moving.

Step 9 — Ural Adjustable Touring Windscreen Only



- For adjustable touring windscreens, insert the plastic slide blocks into the top, rearward facing side of the windscreen.
- Install the two (2) provided carriage bolts through the front top part of the windscreen, through the plastic slide blocks in the rear.

Step 10



- Install the top part of the windscreen onto the lower fixed portion.
- Install the two (2) provided solid backed rubber washers onto the carriage bolts.
- Install the two (2) provided plastic clamping nuts over the backed rubber washers and thread onto the carriage bolts.

Step 11



- Adjust the windscreen up or down to best suit the rider. When satisfied Tighten the plastic clamping nuts securely to lock the adjustment in place.