



How to - Bench Seat Installation

How to install a bench seat on all models excluding Retro.

Written By: David





PARTS:

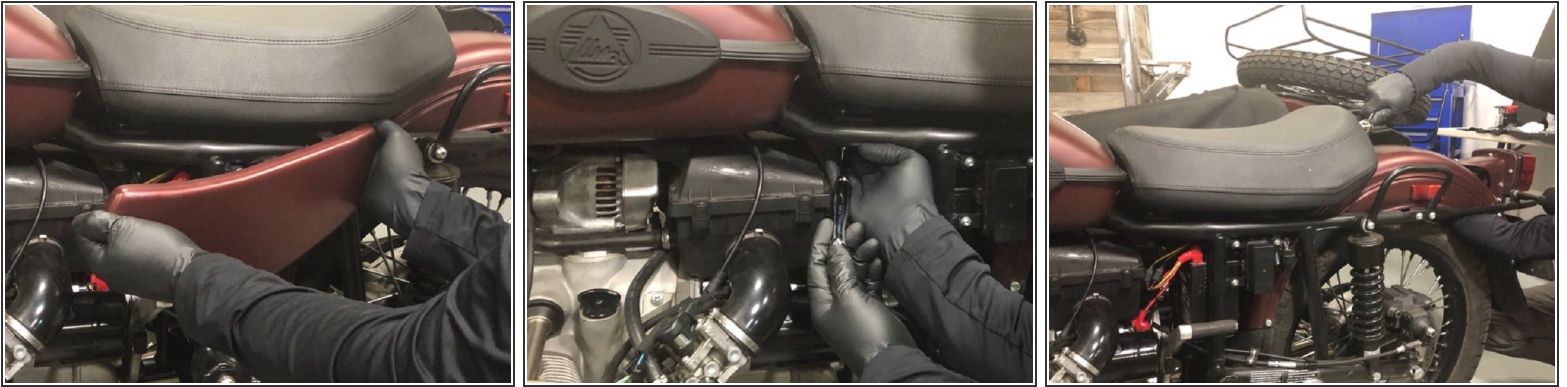
- [Bench Seat Enduro \(1\)](#)

IMZ-8.1041-13001

- [Bench Seat Hardware Kit 50023 \(1\)](#)

50023

Step 1 — Two-Thirds Seat Removal



- Remove side cover.
 - Use a 17mm tool to remove the Nyloc nut and flat washer securing the front mounting stud of the stock seat.
 - Use a 5mm hex key and 13mm tool to remove the two (2) rear button head cap screws, nylock nuts and flat washers.
- ⚠ Take care not to misplace hardware during disassembly that may cause damage to moving parts or electrical components.
- ⚠ Exercise extreme caution when working near the battery to minimize the risk of electrical shock, arcing and/or explosion.

Step 2 — Tractor Seat Removal



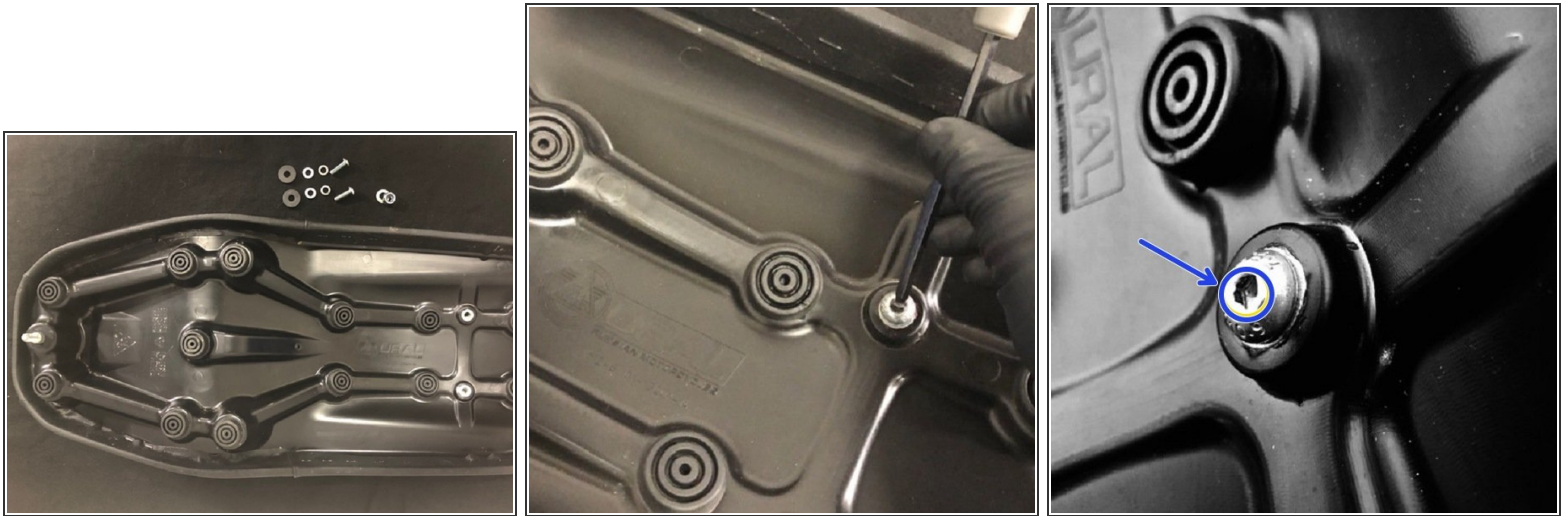
- Use a 5mm hex key and remove the four (4) 8mm button head cap screws securing the tractor seat and seat base plate to the frame.
 - Remove the four (4) 8mm button head cap screws and nyloc nuts retaining the tractor seat to the seat base plate using a 5mm hex key and 13mm tool.
 - Reinstall the seat base plate onto the frame using a 5mm hex key and the four (4) 8mm button head cap screws removed earlier.
- i** It is recommended blue thread locker be used on the four (4) button head cap screws when reinstalling onto frame.

Step 3 — Preparation for New Bench Seat



- If equipped with a rear fender rack, use a 5mm hex key and 13mm tool to remove the four (4) button head cap screws, Nyloc nuts, along with the steel and rubber washers. The two rearward fender rack mounting holes are used to mount the bench seat, no drilling is required. Proceed to Step 6.
- If not equipped with a rear fender rack, protect the fender in preparation for marking the locations for holes to be drilled with tape or another suitable material.
- Place the new bench seat on the fender. Measure and mark the center location of the fender so it is visible on the tape with the seat sitting on the fender.
- Use a piece of tape and mark the bottom center on the rear of the bench seat as well.

Step 4 — Prepare New Bench Seat



- Prepare bench seat by installing two (2) 8mm button head cap screws from Bench Seat Hardware Kit 50023 into the rear threaded insert locations using a 5mm hex key.
- Loosely seat the 8mm button head cap crews fully into the threaded inserts until they stop.
- Using white grease, paint or another suitable alternative. Apply to the top of the 8mm button head cap screws.

Step 5 — Marking Hole Location



- Place the front stud of the bench seat into the elongated hole on the seat base plate.
- ⓘ Be mindful and hold the rear of the seat off the fender. Do not allow the rear button head bolts to make contact with the rear fender just yet.
- With the front stud in place, push the seat forward towards the gas tank slightly and then down towards the fender, aligning the center marks made previously (Step 2) on the seat and fender.
- Press the rear of the seat firmly against the top of the rear fender. The button head bolts will mark the location to be drilled by transferring the marking material previously applied to the button heads to the tape on top of the fender.
- Lift seat up as straight as possible to ensure a positive mark is achieved without smearing the marking material.

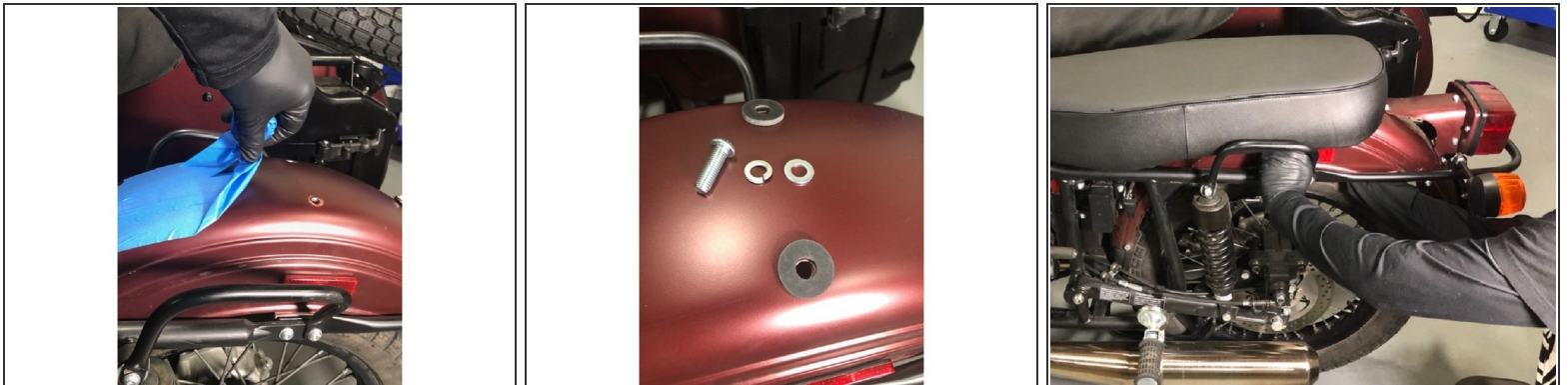
Step 6 — Drilling Marked Locations



i If the seat holes are off center they can be measured and adjusted along the same plane as the button head caps screws have marked.

- Use a center punch to mark the center of the hole to be drilled.
- Drill two (2) 9mm (23/64) or similar clearance holes for the 8mm bolts.

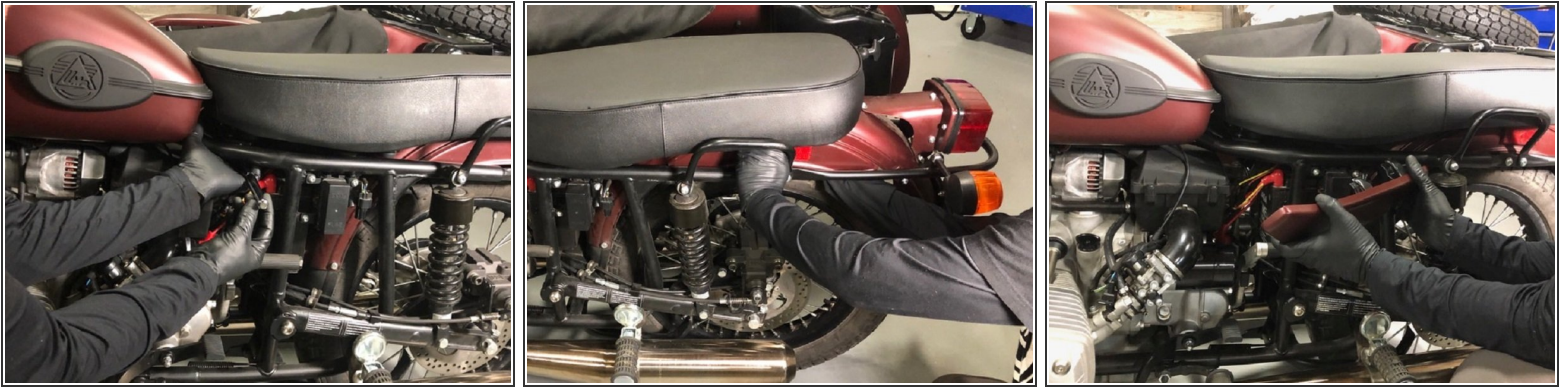
Step 7 — Mounting Bench Seat



i Touch-up paint or clear nail polish can be applied to a newly drilled hole to prolong the inevitable formation of rust.

- Place the rubber washers on top of the fender.
- Thread the 8mm button head cap screws, flat and spring washers from the underside of the rear fender until snug.

Step 8 — Finalizing Bench Seat Installation



- Move to the front mounting point and install the flat washer and Nyloc nut using a 17mm tool. Tighten firmly.
- Return to and firmly tighten the two (2) rear 8mm button head cap screws that secure the rear of the bench seat.
- Replace the side panel and enjoy your new bench seat!